

射出成形のAI搭載化手法

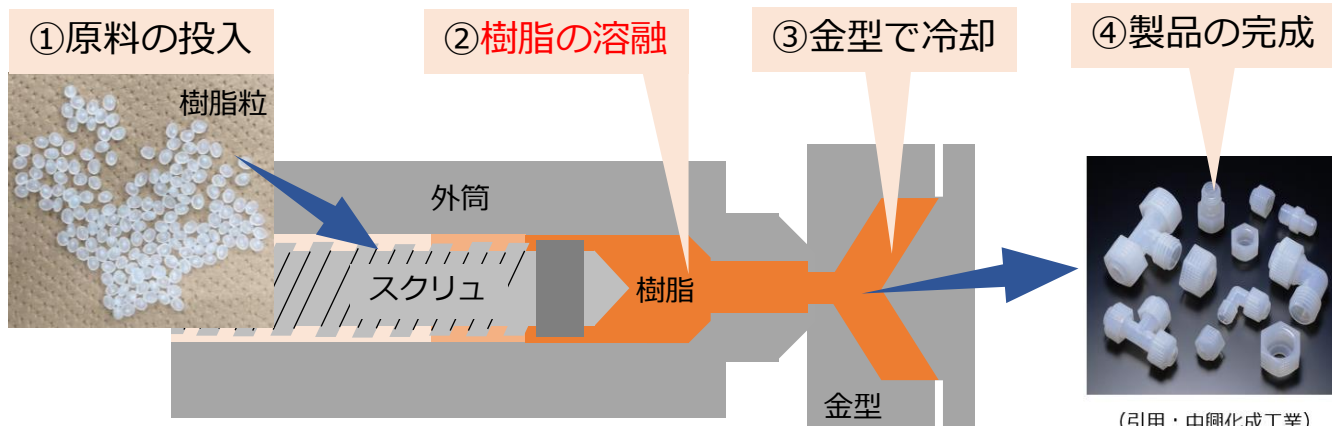
射出成形機って？

樹脂製品を

- ・低コスト
- ・大量生産
- ・複雑形状

で生産可能

工業利用される



射出成形機のメカニズム

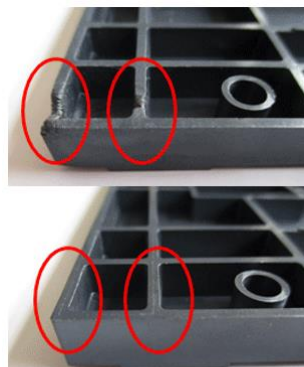
(引用：中興化成工業)

研究背景

成形不良が問題

原因は樹脂の溶融

溶融中の樹脂の定量的な評価が必要



不良成型例、ショートショット
(引用：株式会社御幸)

研究目的

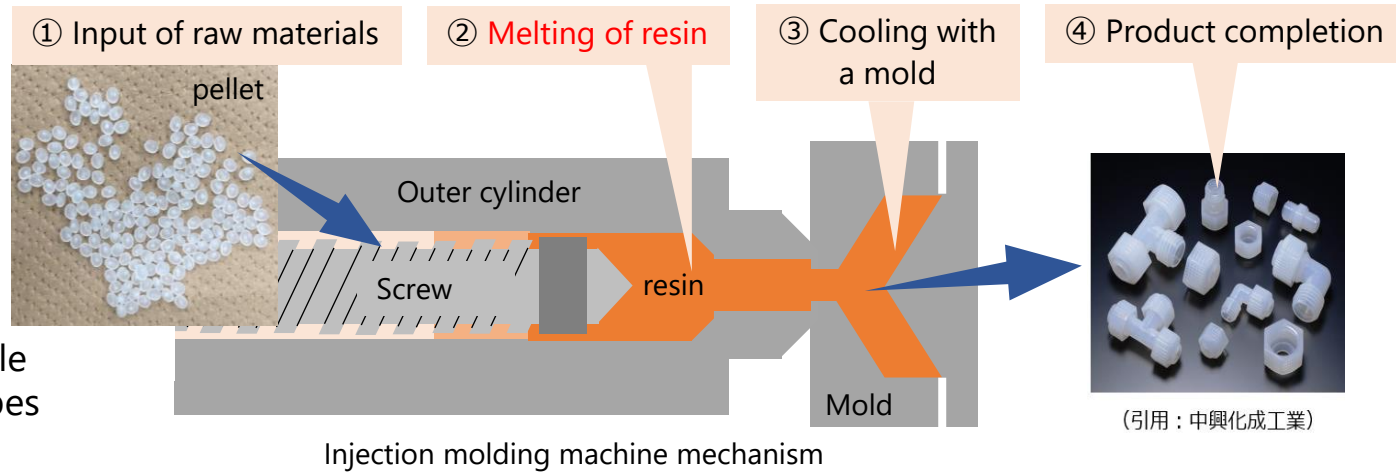
樹脂の溶融と射出成形機の
パラメータの関係を明らかにし
AI制御を確立する

AI mounting method for injection molding

What is Injection molding machine ?

Resin products are made using an injection molding machine. The following merits can be mentioned.

- Low cost
- Mass production possible
- Can make complex shapes



Research background

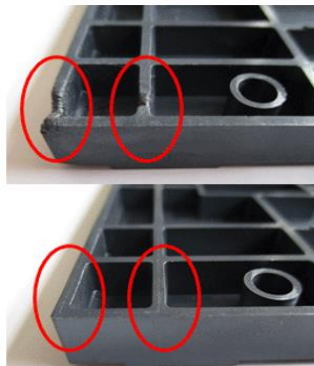
Molding defects are a problem.



The cause is the melting of the resin.



Quantitative evaluation of the resin being melted is required.



不良成型例、ショートショット
(引用：株式会社御幸)

Purpose of research

Establish AI control by clarifying the relationship between resin melting and injection molding machine parameters.